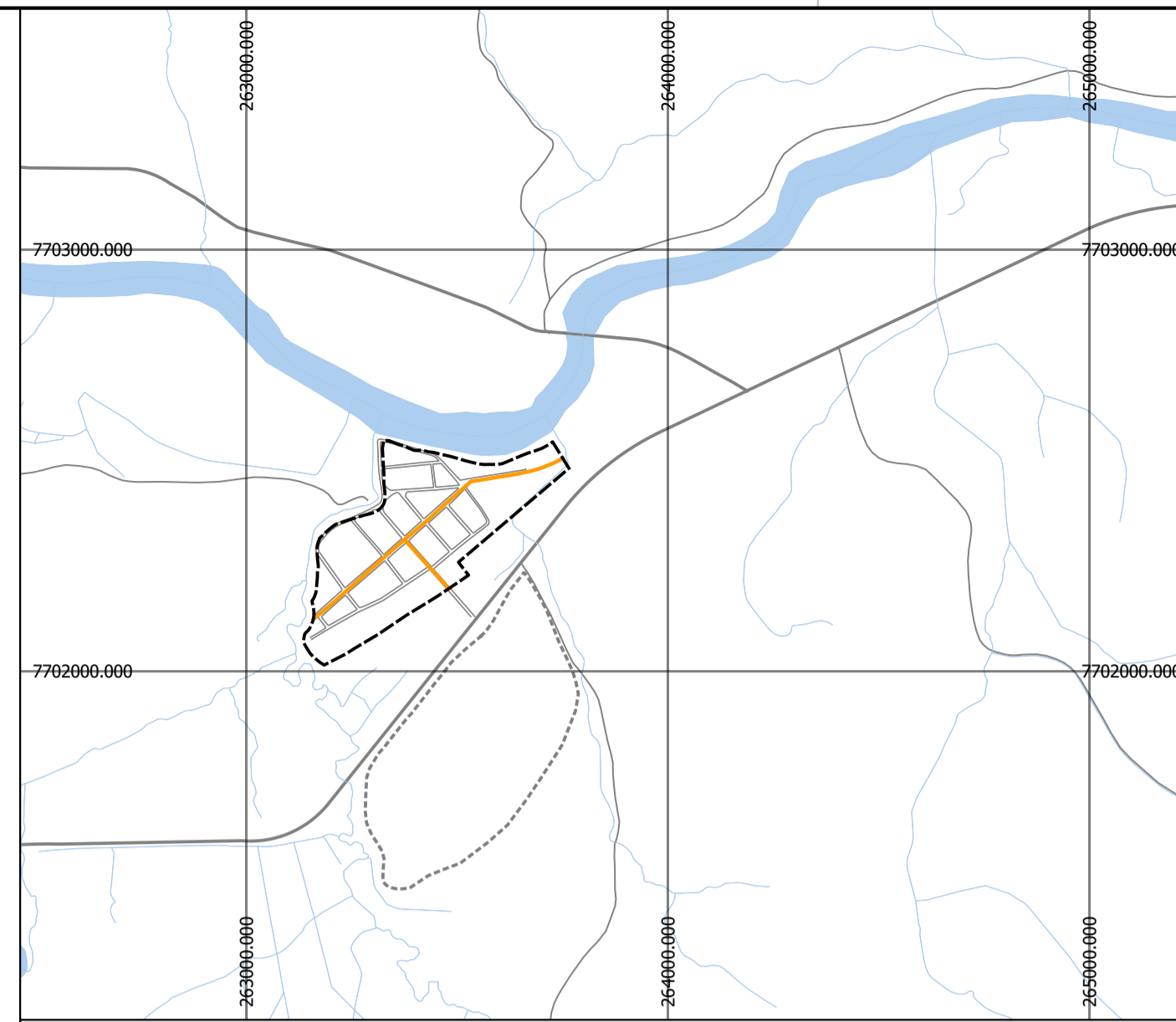
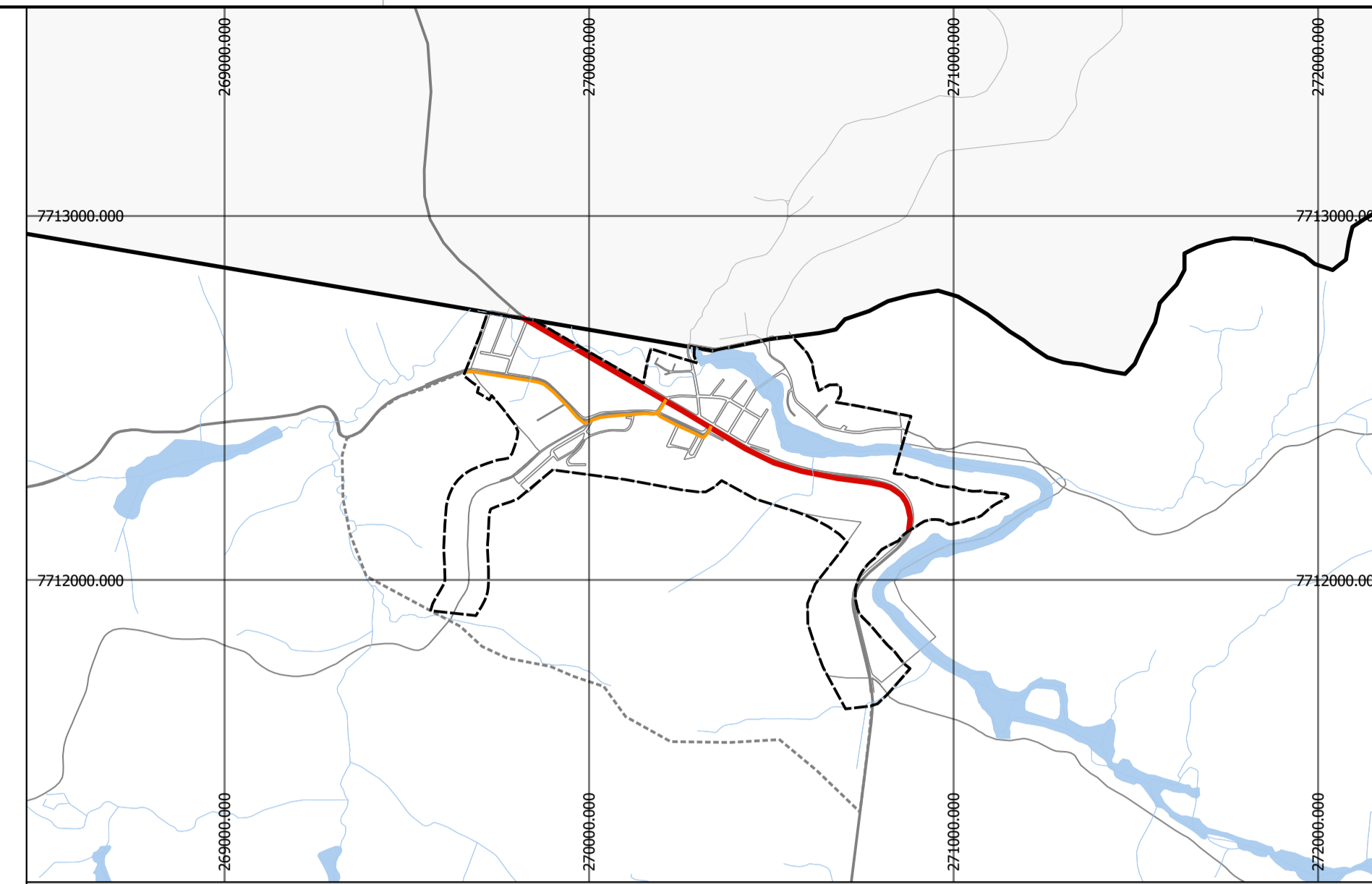


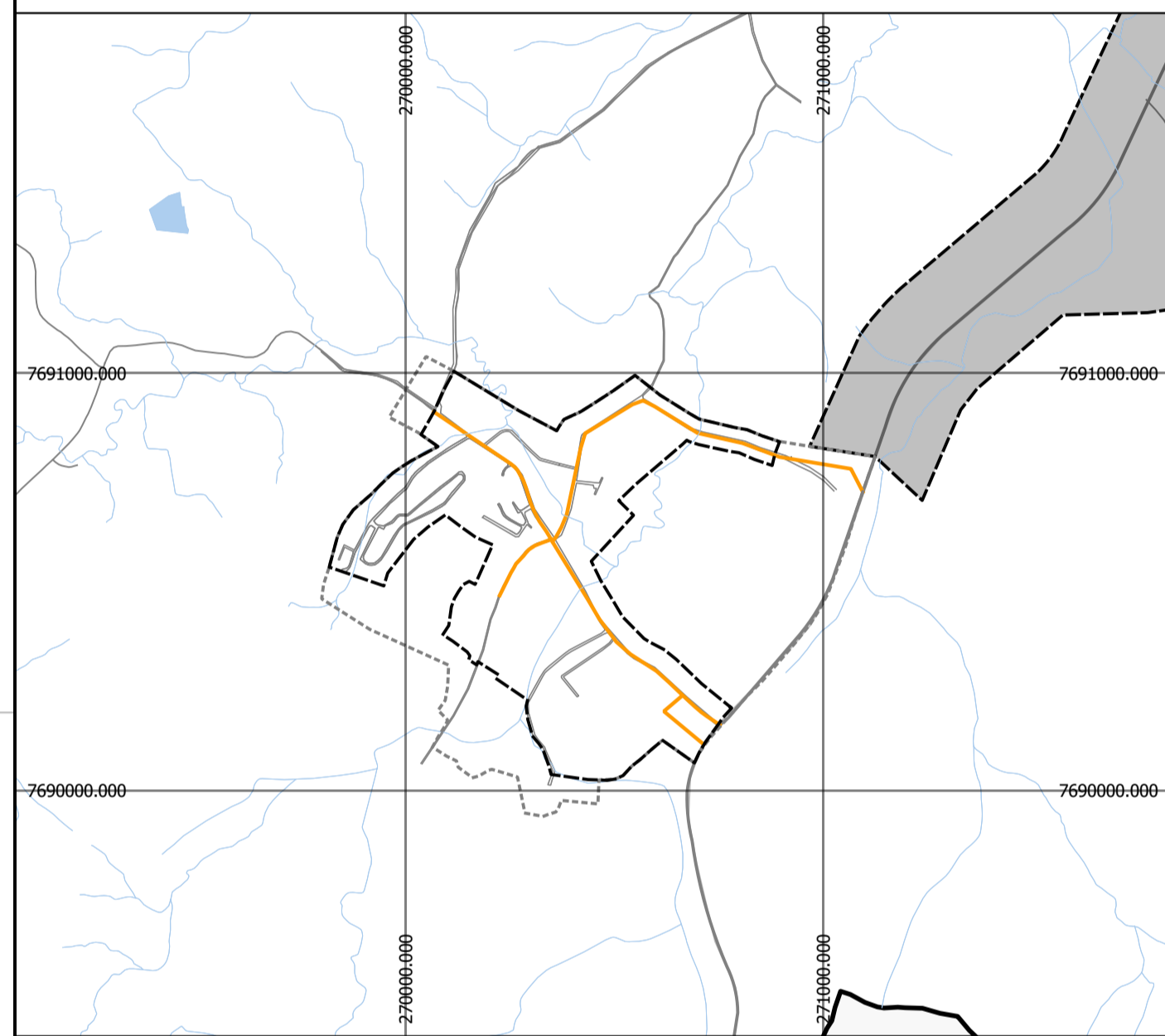
1 - BURARAMA



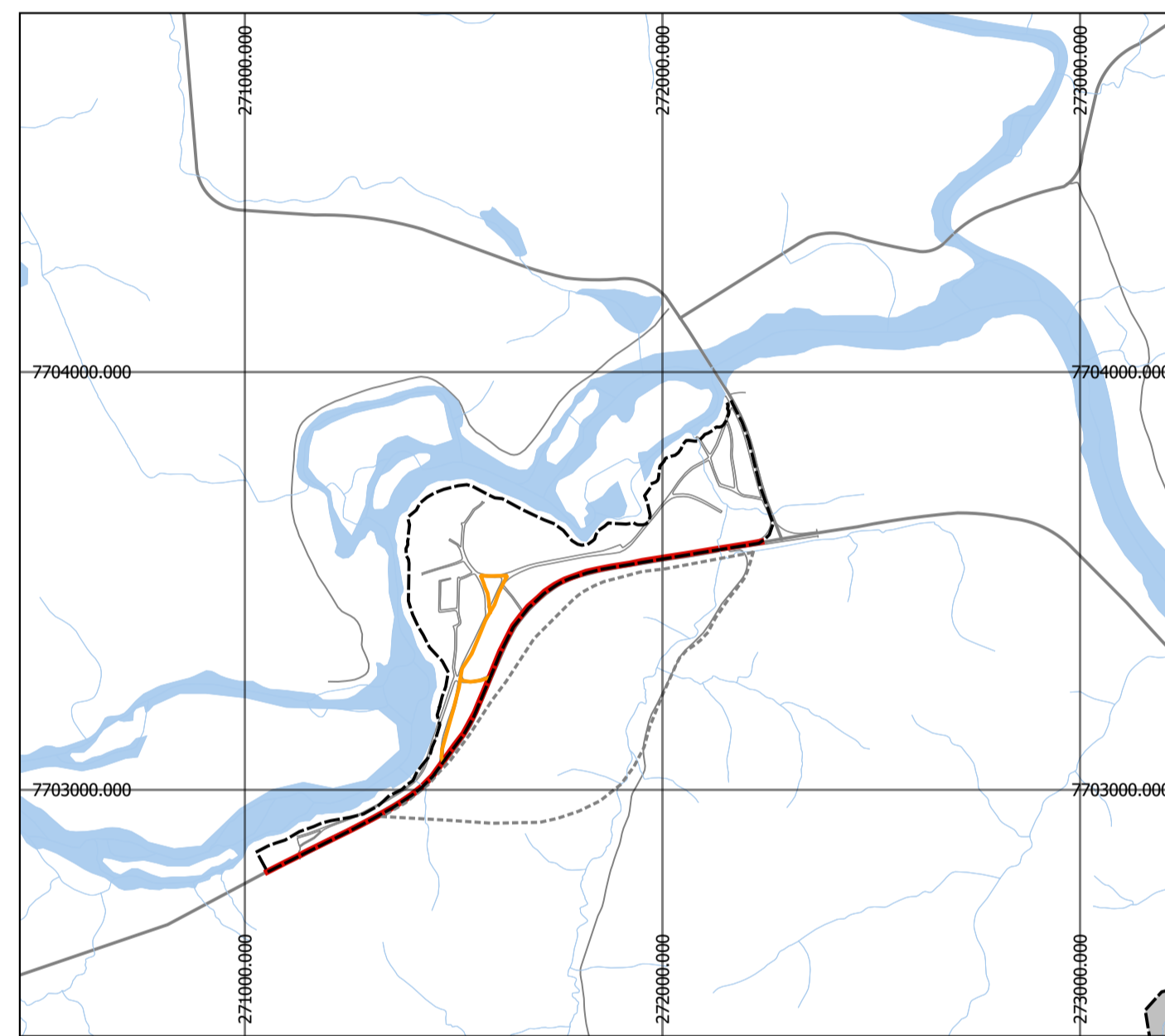
2 - PACOTUBA



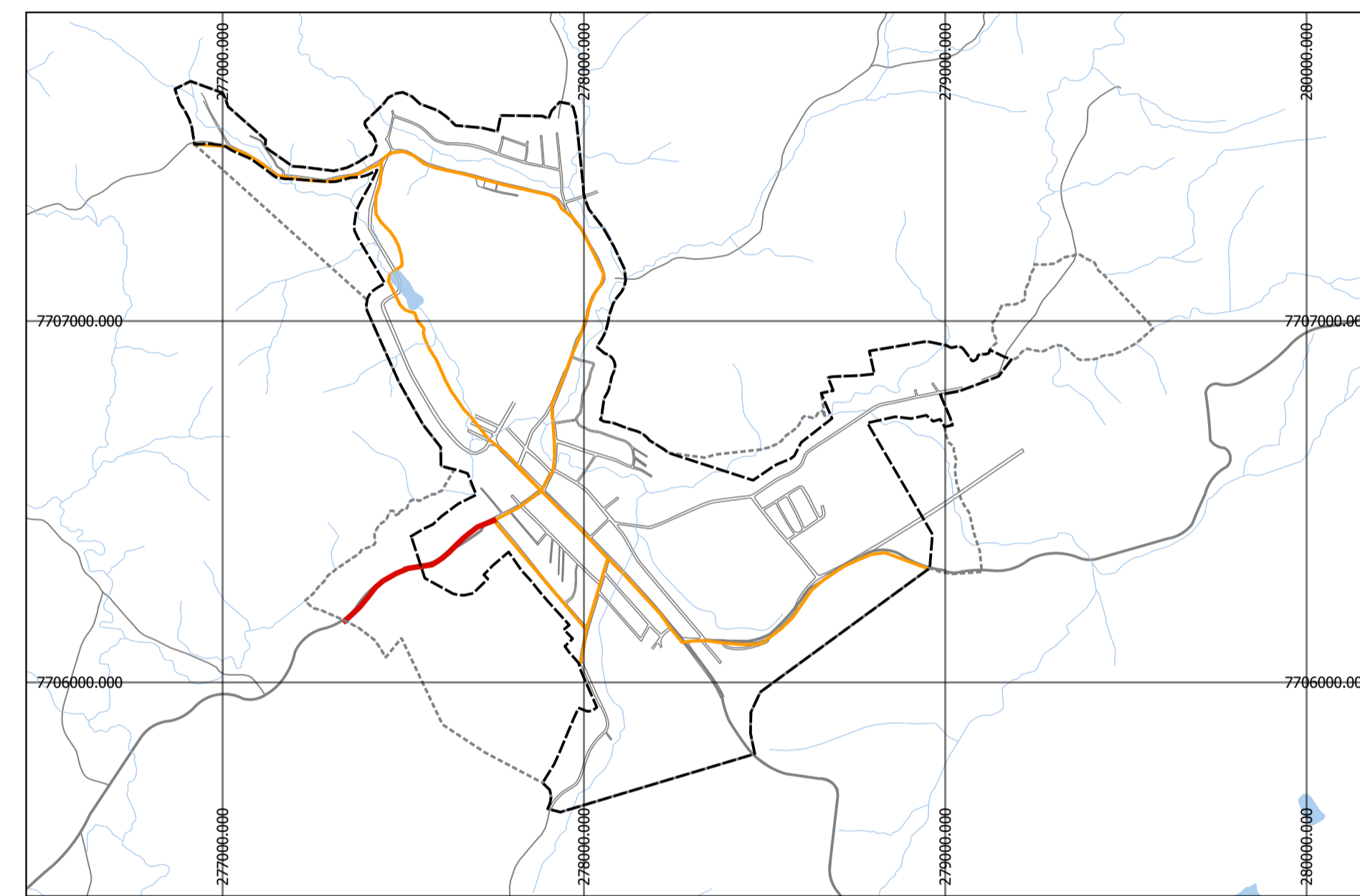
3 - CONDURU



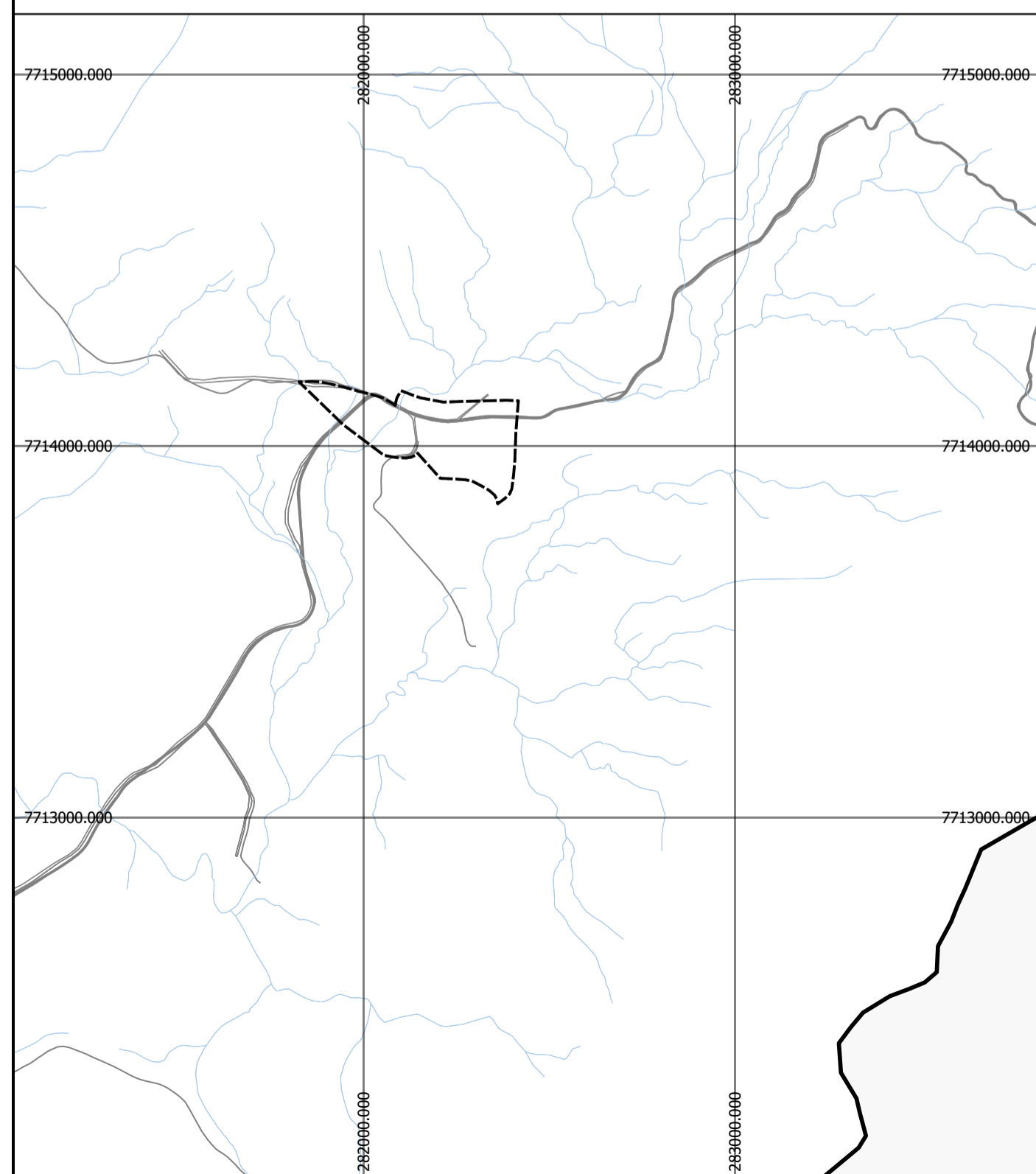
4 - CÔRREGO DOS MONOS



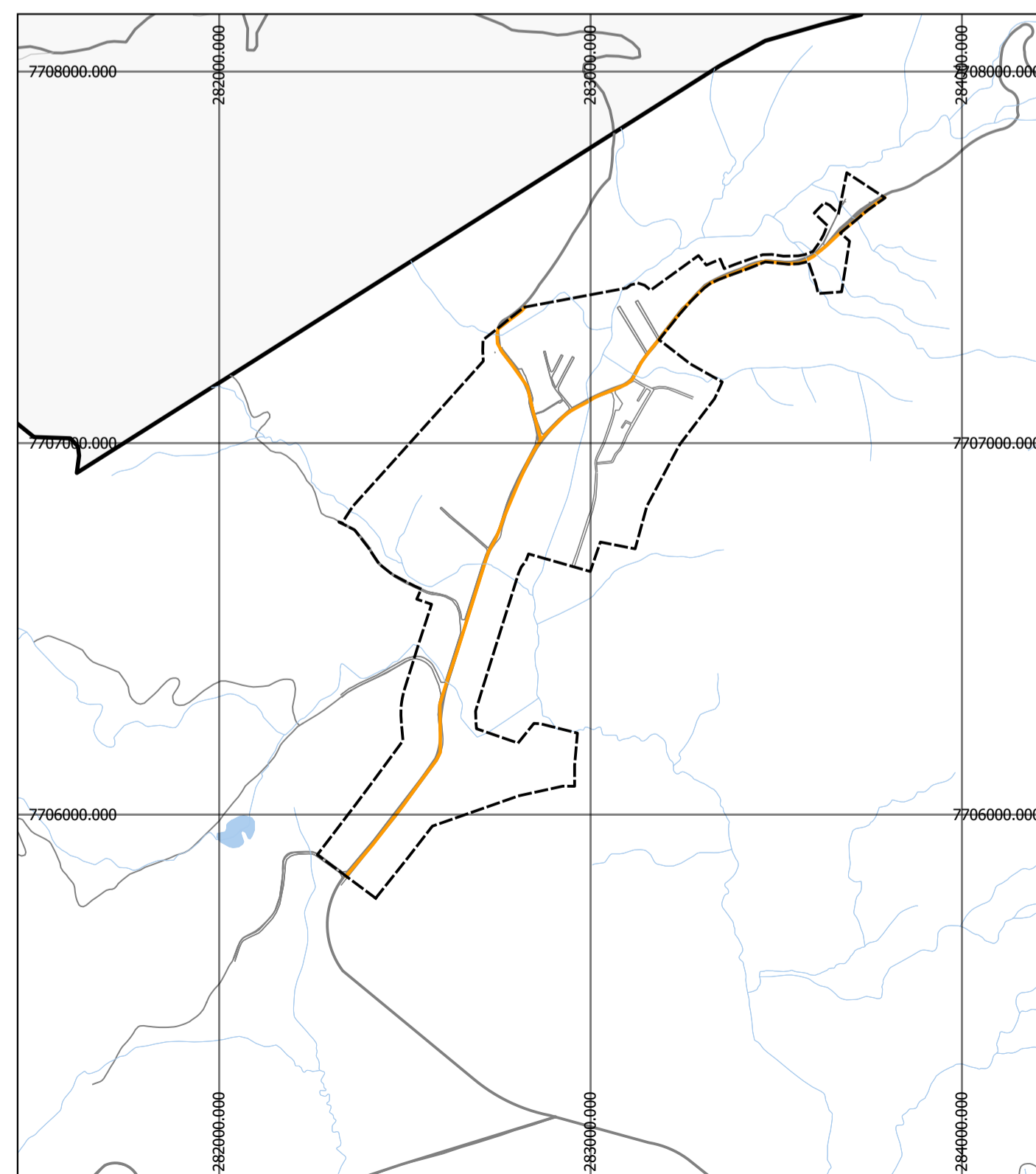
5 - COUTINHO



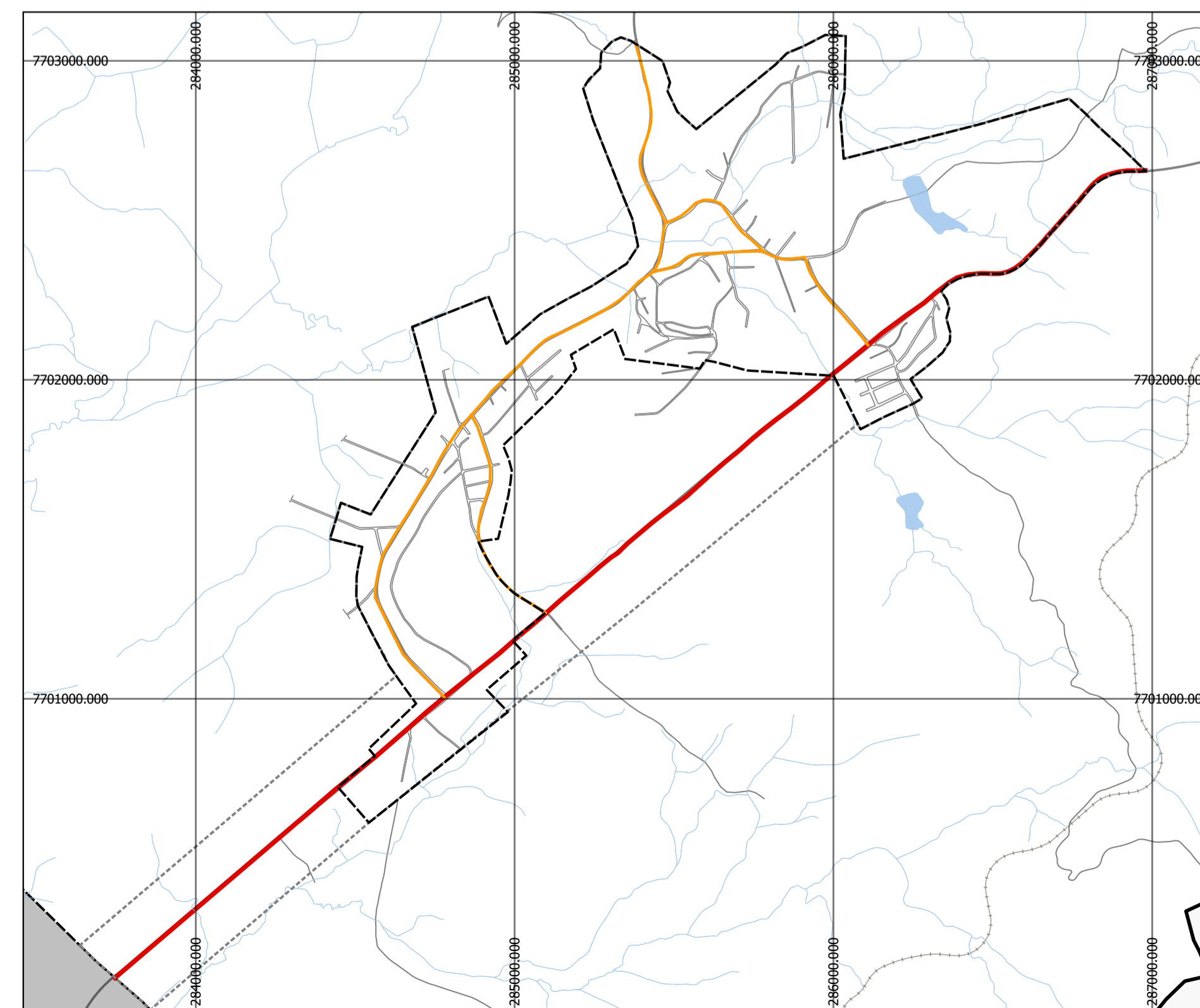
6 - ITAÓCA



7 - SÃO VICENTE

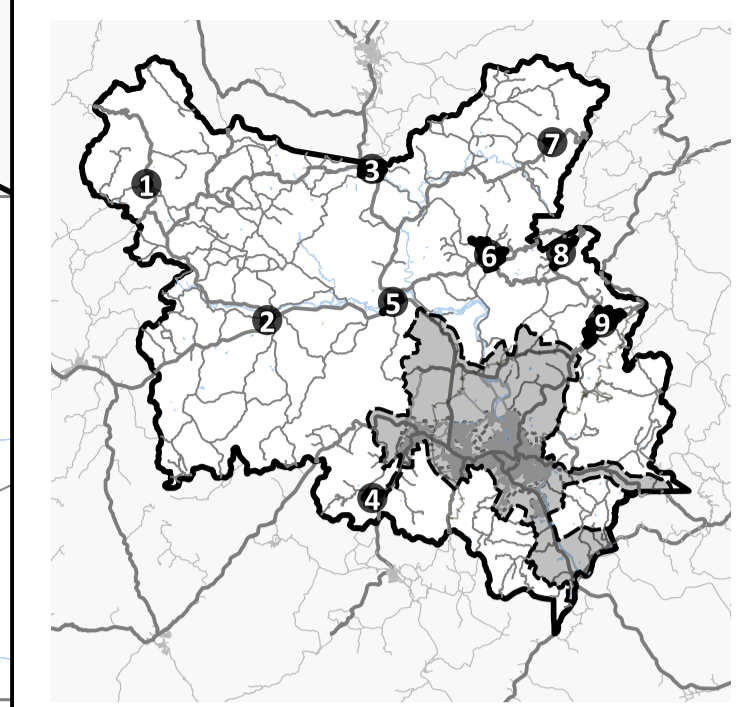


8 - GIRONDA



9 - VARGEM GRANDE DE SOTURNO

LOCALIZAÇÃO

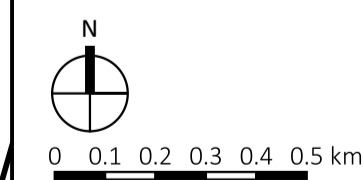


- LOCALIZAÇÃO DOS DISTRITOS:
- 1- BURARAMA
  - 2- PACOTUBA
  - 3- CONDURU
  - 4- CÔRREGO DOS MONOS
  - 5- COUTINHO
  - 6- ITAÓCA
  - 7- SÃO VICENTE
  - 8- GIRONDA
  - 9- VARGEM GRANDE DE SOTURNO

LEGENDA

- HIERARQUIA VIÁRIA:
- VIAS ARTERIAIS
  - VIAS COLETORAS
  - VIAS LOCAIS

- HIDROGRAFIA
- PERÍMETROS URBANOS - DISTRITOS
- EXPANSÕES DOS PERÍMETROS URBANOS
- PERÍMETRO URBANO - SEDE
- LIMITE MUNICIPAL



REVISÃO DO PLANO DIRETOR MUNICIPAL

PREFEITURA MUNICIPAL DE CACHOEIRO DE ITAPEMIRIM / ES

LATUS CONSULTORIA, PESQUISA E ACESSORIA DE PROJETOS LTDA

ANEXO IX - HIERARQUIA VIÁRIA DAS SEDES URBANAS DOS DISTRITOS

RESPONSABILIDADE TÉCNICA: Arq. e Urb. Jacqueline Menegassi  
 ELABORAÇÃO CARTOGRÁFICA: Arq. e Urb. Raquel Werner de Vargas

ESCALA: 1/15.000 | PROJEÇÃO E DATUM: Sirgas2000 UTM 24S